

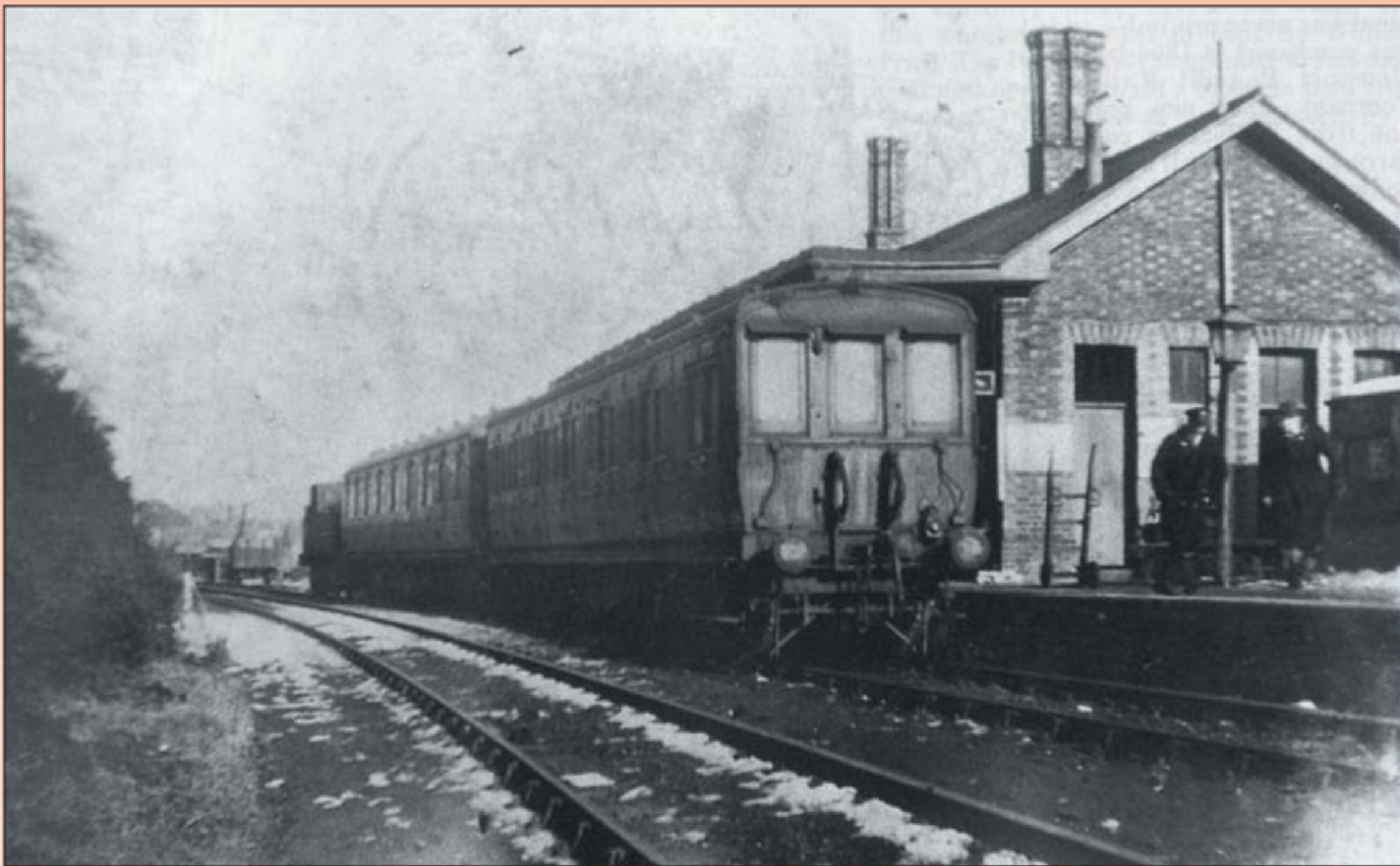
Heritage Hunters



These display panels were researched and compiled by pupils from Green Park School, Newport Pagnell

The Railway Station

Newport Pagnell



Newport Pagnell station

Work on the line from Newport Pagnell to Wolverton was started in August 1864. The railway was built on top of, and replaced the canal.

The branch line was owned by the Newport Pagnell Railway Company and they wanted to extend it to Olney. However, the line was never completed but you can still see the embankment in Bury Field and Emberton Park.

In 1875, the line was taken over by the London and North Western Railway. This was when the signal post was installed known as the 'Calling on arm' which still stands today.

The last scheduled passenger train to run on the line was hauled by Ivatt 262 tank number 41222 on the 5th September 1964.

Today you can stand on Railway Walk, and the sidings of the railway are now allotments.



Railway Walk and the signal post June 2010