

Explore Your Archive

Explore Your Archive is a joint campaign delivered by The National Archives and the Archives and Records Association across the UK and Ireland

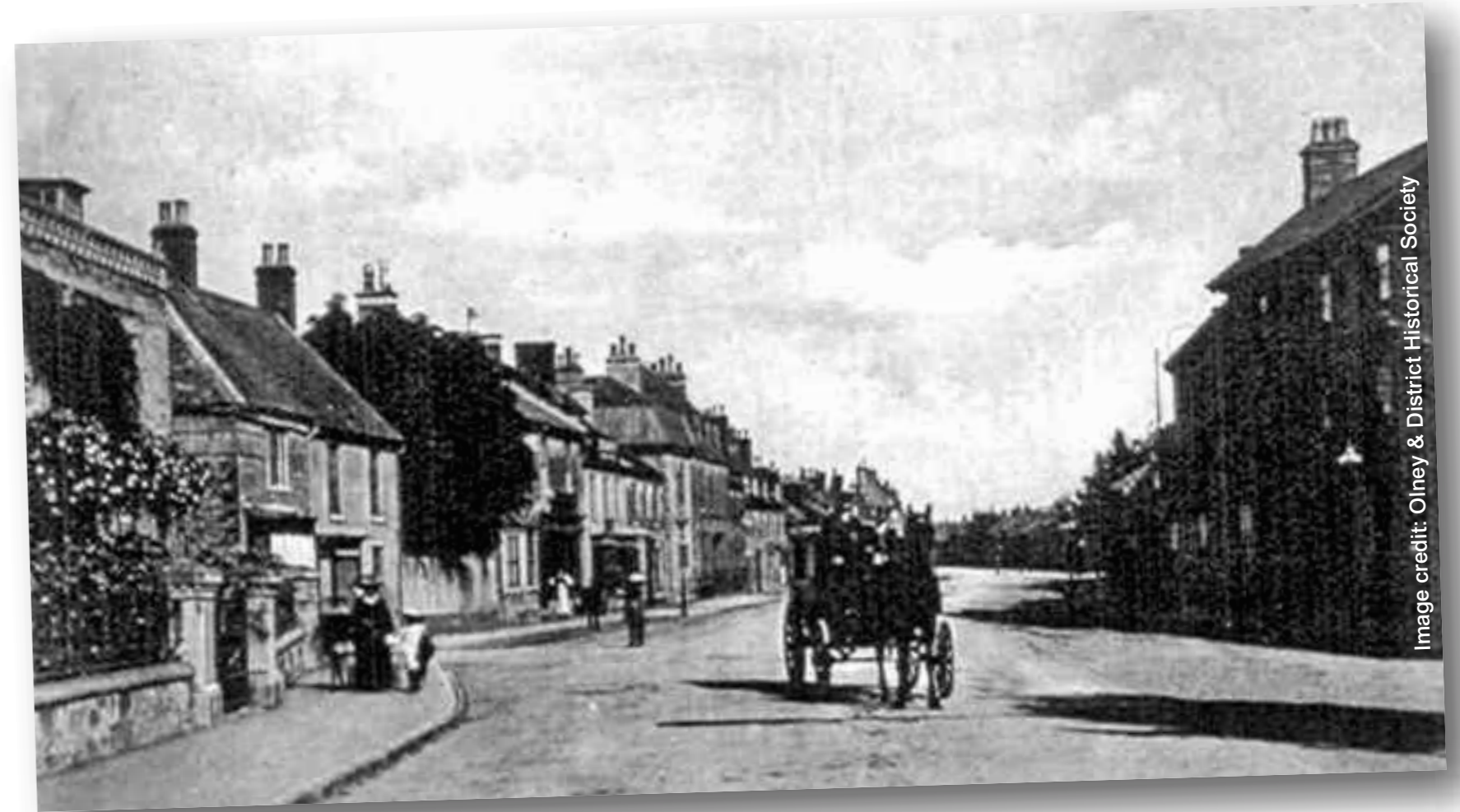
Relive Georgian Life – Olney



Ordnance Survey First Series 1:63360, 1835

'From Newport-Pagnell a turnpike road passes through Sherrington and Emberton to Olney; and thence, through Cold-Brayfield, towards Bedford. Another road, passing through Weston Underwood, connects Olney with the Northampton road.'

'The road from Newport-Pagnell to Bedford, passing through Chicheley and Astwood, which was formerly the principal road from Oxford to Cambridge, and the route of the judges on the midland circuit, is still so described in the Itineraries; but it has been many years neglected and disused, and is now quite impassable for carriages.'



Mail coach in Olney from the late 1800s



Tickford Bridge, Newport Pagnell



Footnote: 'MAGNA BRITANNIA; BEING A CONCISE TOPOGRAPHICAL ACCOUNT OF THE SEVERAL COUNTIES OF GREAT BRITAIN' by the Rev. DANIEL LYSONS & SAMUEL LYSONS 1813 (Vol 1 part 3 contains information about the towns and villages of Buckinghamshire)

Most travelling was by walking or horseback but better roads for wheeled transport were being constructed in the 1700s. From around 1754 the road from Newport Pagnell to Olney was a toll road or turnpike. A 'TG' on the map is for 'Tollgate' where you paid your fee for travelling along the road.

