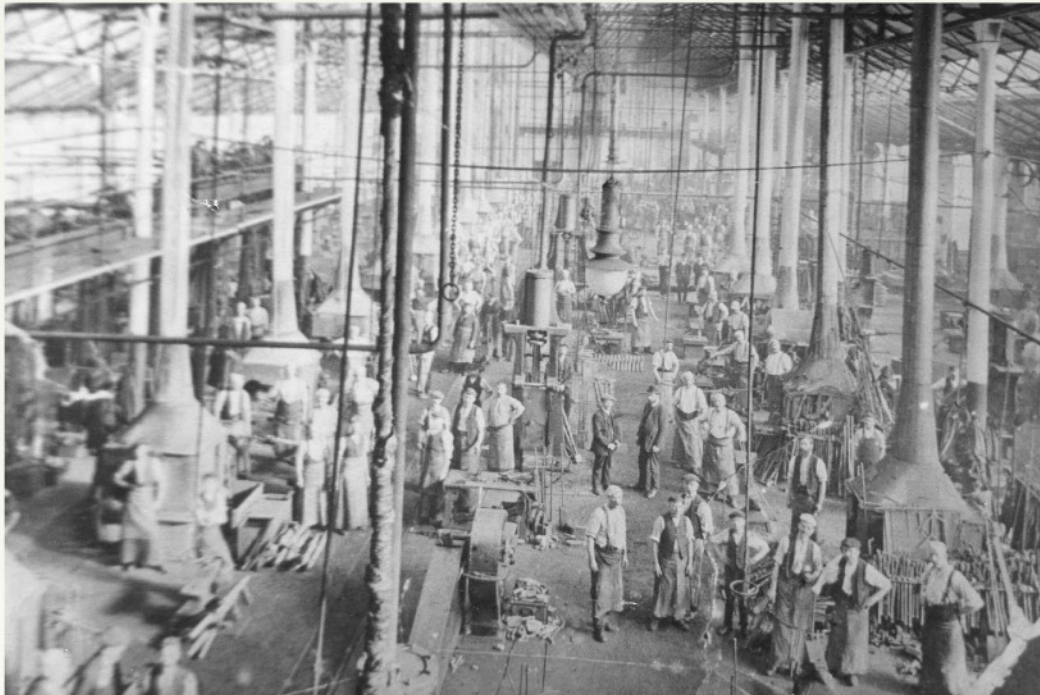


# The Wolverton Trail

## Behind the scenes at Wolverton Works

Since 1838, the oldest established existing industry in Milton Keynes



The huge engine shed at Wolverton Works c1900, Living Archive collection

*'I first visited the Works on Open Days with my father during the late 1940s, impressed by the huge high buildings which housed an amazing array of strange machines. I remember the strange smells differing from shop to shop...'*

Linda Frost

Linda revisited the Works during the special Heritage Open Day on 9th September 2007:

*'The 'Works' I visited today bears no relation to my earlier memories... but I was impressed by the standard of work and the pride that remains. The spirit that has always been the 'Works' still survives!'*

In 1851, Wolverton's Locomotive Superintendent James McConnell engineered a masterpiece - the Bloomer, named after daring designs that showed ladies' legs:

*'A full-sized replica of the Bloomer is currently being renovated on site, to be re-sited in Wolverton as a lasting memorial to the skills and contribution of the Wolverton staff.'*

D Hilliard, Business Improvement Manager, Railcare Ltd



Photograph courtesy of Stephen Frost

**THE 2008 WOLVERTON TRAIL!**  
 Sunday 14th September: The 2008 Heritage Open Day

