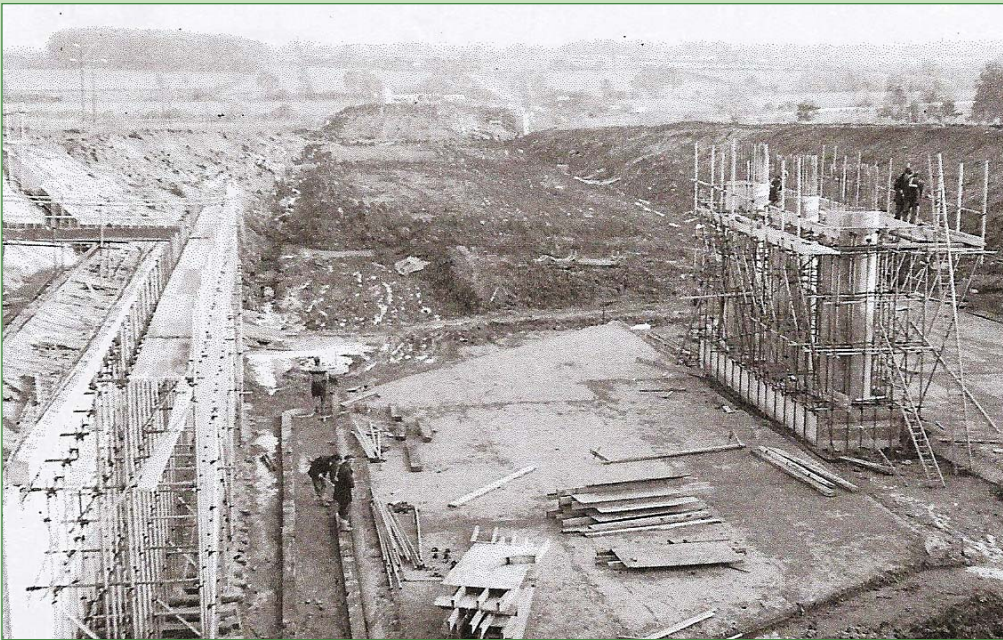


# GO MILTON KEYNES!

## Transport and Travel

# The Newport Pagnell Motorway Services

## Another first for Milton Keynes!



The site located both sides of the motorway between junctions 14-15. Original owners Fortes managed the site from offices in Newport Pagnell. Current owners: Welcome Break

Images courtesy of Gerald Stratton

The Newport Pagnell Motorway Services opened on 15th August 1960 – the first in England.

They had to open two hours early as queues of curious public had formed!

Before the main services buildings opened, there had been only emergency facilities – for toilets, fuel and breakdowns.

But the new services were not without criticism too:

- Motorway Services Ltd (Fortes and Blue Star Garages) provided a range of fuels to motorists but the nationalities of the petrol companies sparked debate and criticism in the House of Commons.

- And the designs for these Services received widespread criticism from The Royal Fine Art Commission, the Royal Institute of British Architects and the Landscape Advisory Committee.

When the Services first opened there were cafeterias and shops on both sides which were open for 24hrs. On the west side was a 'Grill and Griddle' silver service restaurant which became 'the place to go' but was used mainly for business meetings being midway between London and Birmingham. Initially the Service area was open to local residents, giving access to the facilities and providing an extra junction!

Information from the Newport Pagnell Historical Society:

[www.mkheritage.co.uk/nphs](http://www.mkheritage.co.uk/nphs)

**DISCOVER**  
MILTON KEYNES