

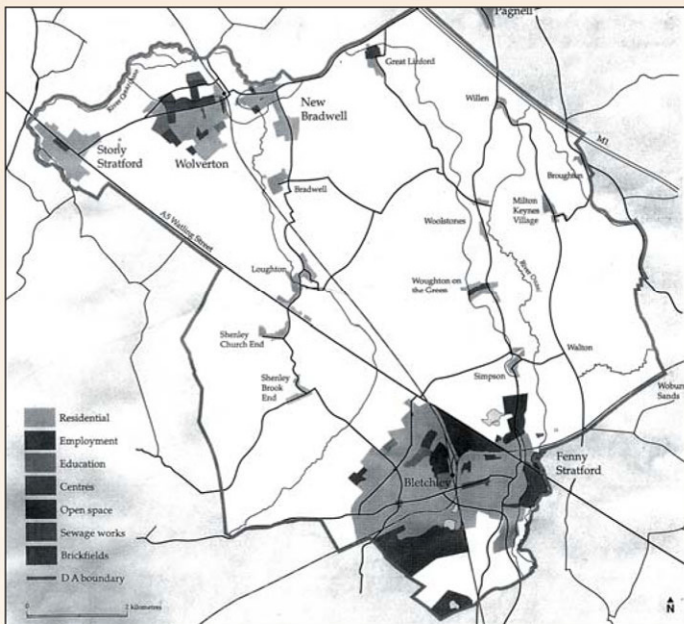
Heritage Hunters



These display panels were researched and compiled by pupils from Milton Keynes Academy

My Favourite Place in Milton Keynes

Written by Cameron Wilson, Year 7



Boundary Line c.1969

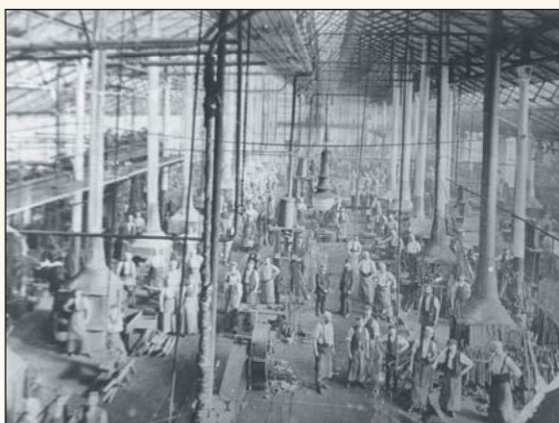
Introduction

Milton Keynes is not a great city because it is not a city; it is a great town.

In 1967 about 40,000 people lived within the area, in three towns and 13 villages. Most of the 13 villages were recorded in the Domesday Book, one of which Milton Keynes was named after.

The Government appointed the Development Corporation. They used a grid pattern of roads and set aside a string of linear parks to control flooding. A number of balancing lakes were constructed.

The basic plan for Milton Keynes was to build up the city between Stony Stratford, Wolverton, Bletchley and Fenny Stratford. A grid road system was laid down using roundabouts at junctions.



Wolverton Works c.1910



Bletchley late 1920s. The old gas lamps are still in place