

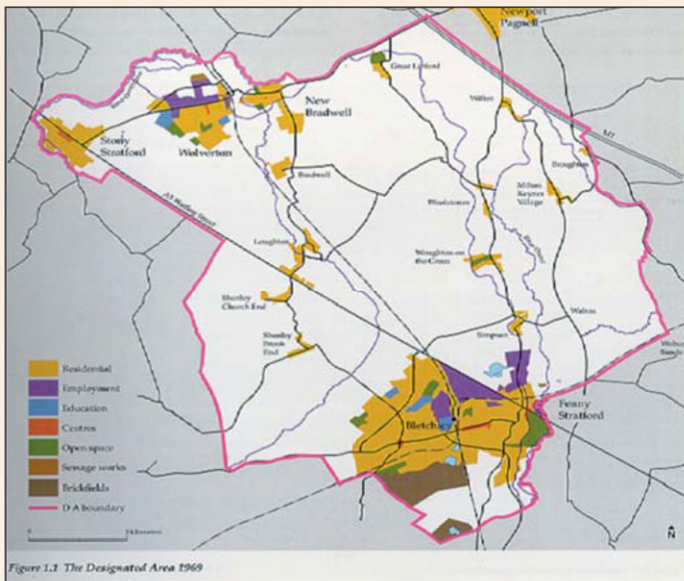
Heritage Hunters

Milton Keynes Academy

These display panels were researched and compiled by pupils from Milton Keynes Academy

Is Milton Keynes a Great City?

Written by Lauren Spencer, Year 7



The designated area of Milton Keynes c.1970

Milton Keynes history

In January 1967, Milton Keynes was named as a new city. It is a large town in Buckinghamshire, 49 miles north-west of London. Milton Keynes was deliberately located in this area so that London, Birmingham, Leicester, Oxford and Cambridge were all within travelling distance.

The area joined the surrounding towns of Stony Stratford, Wolverton and Bletchley and another 13 villages also. Milton Keynes was named after Milton Keynes village which is a few miles east of the new city.

Milton Keynes was firstly created to relieve London and its boroughs of housing congestion. In 2001, the population census of Milton Keynes including Newport Pagnell was 184,506. The population now is estimated to be over 230,000.

